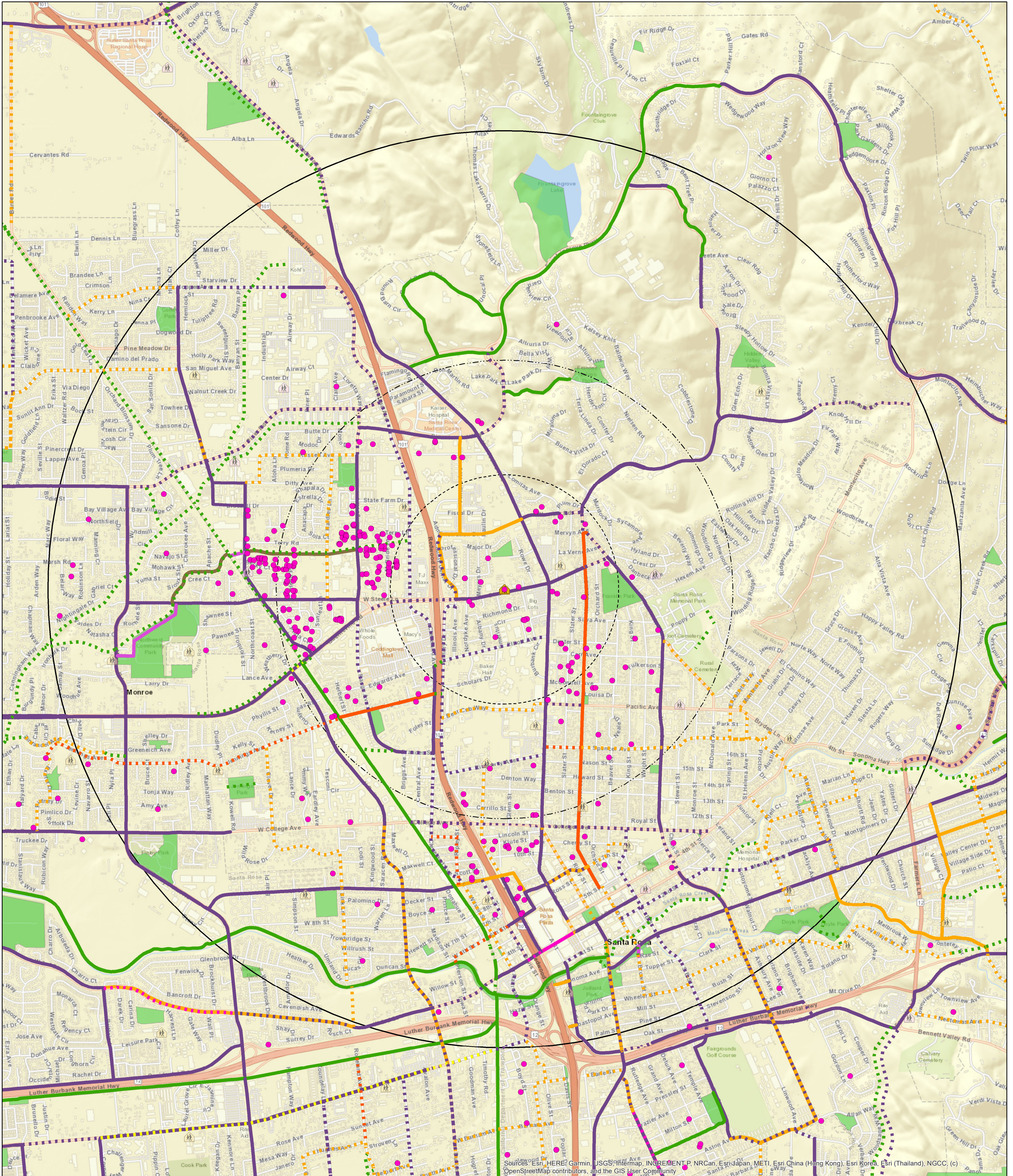


# S A F E R O U T E S T O S C H O O L



Sources: Esri, HERE, Garmin, USGS, Intermap, INCREMENT P, NRCan, Esri Japan, METI, Esri China (Hong Kong), Esri Korea, Esri (Thailand), NGCC, (c) OpenStreetMap contributors, and the GIS User Community

## Steele Lane Elementary 2023-24 SRTS Study Map

364 Geocoded Students  
 318 Students live within 2 miles of the school (87%)  
 225 Students live within 1 mile of the school (62%)  
 46 Students live within 1/2 mile of the school (13%)  
 17 Students live within 1/4 mile of the school (5%)



- |                              |                            |
|------------------------------|----------------------------|
| <b>Bike Plan Existing</b>    | <b>Bike Plan Proposed</b>  |
| Class I                      | Class I                    |
| Class II                     | Class II                   |
| Class III Buffered Bike Lane | Class 2 Buffered Bike Lane |
| Class III                    | Class III                  |
| Bike Boulevard               | Bike Boulevard             |
| PP                           | Class IV Separated Bikeway |
| Trail                        |                            |

Map Creation Date: [Insert Date Here](#)



Map Produced by: Sonoma County Bicycle Coalition  
 750 Mendocino Ave, Suite 6  
 Santa Rosa, CA 95401  
 Phone: 545-5113

**Author:** Sonoma County Transportation Authority  
**Projection and Coordinate System Tics:** California State Plane Coordinate System, Zone II, NAD 83, US survey feet, Lambert Conformal Conic. Some data have been re-projected from other coordinate systems and may not reflect actual ground positions.  
**Document Source and Date:** [I:\sc-gis\data\gis\projects\Health Services\Public Health\Safe Routes Schools\2012\MapBookHav.mxd](#)  
**Source:** Sonoma County GIS Central, Sonoma County Public Safety Consortium, Sonoma County Transportation Authority, Sebastopol Union School District.  
 This map is provided as a visual display of County information. Reasonable effort has been made to ensure the accuracy of the map and data provided; nevertheless, some information may not be accurate. The positional accuracy of the data is approximate and not intended to represent map accuracy from a THE MAPS AND ASSOCIATED DATA ARE PROVIDED WITHOUT WARRANTY OF ANY KIND, either expressed or implied, including but not limited to, the implied warranties of merchantability and fitness for a particular purpose. Do not make a business decision based on this data before validating your decision with the appropriate County agency or other government entity.