

# La Tercera Walk Audit Recap & Discussion

---

SAFE ROUTES TO SCHOOL TASK FORCE

APRIL 18, 2024



# Loma Vista Walk Audit

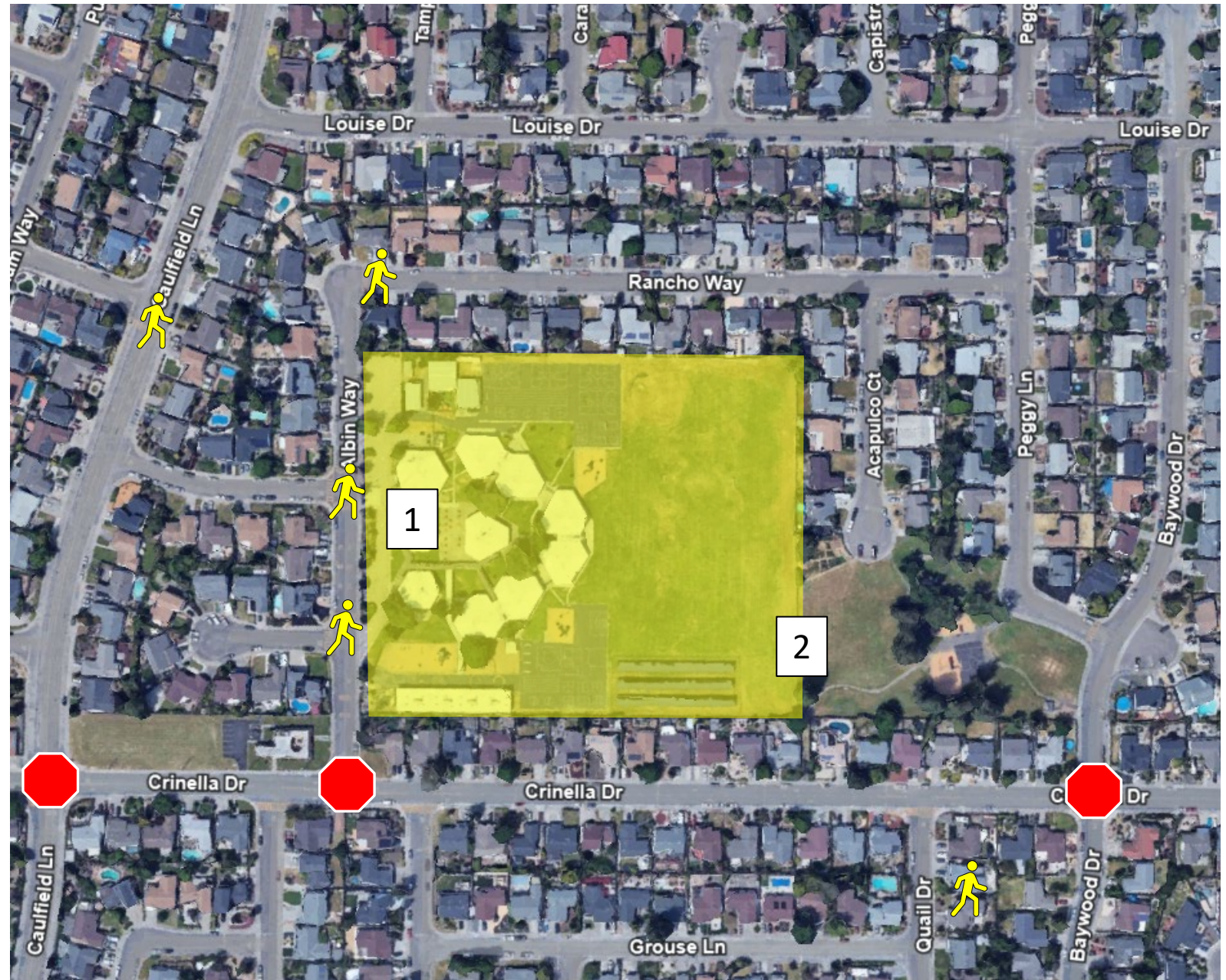
- Tuesday, April 16, 8 AM
- Participants from Safe Routes to Schools, Cool Petaluma, City (Public Works & Police), La Tercera
- Focused on Albin Way, Marguerite Way, Caulfield Lane, and Crinella Drive





# Campus Access Points

- 1) Main entrance on Albin Way
- 2) La Tercera Park Gate (no longer used)





# Drop-Off Observations

- Crossing Guard at Albin/Marguerite
- School frontage on Albin Way designated as loading zone during school hours
- Driveway reserved for buses
- Some parents drop-off further away on neighborhood streets
- Some loading issues observed







## Albin & Marguerite Way:

- Fix flashing beacon (COMPLETE!)
- Add red curb and bulbouts
- Consider white edgeline dividing loading zone from travel lane
- Explore conversion to all-way stop
- Opportunities to make crossing guard's job more efficient





Bulbout at Payran & Jefferson





## Caulfield Lane

- Bush obstructing view off Marguerite reported to Code Enforcement
- Pavement project with lane reduction and bike/ped improvements scheduled for 2026

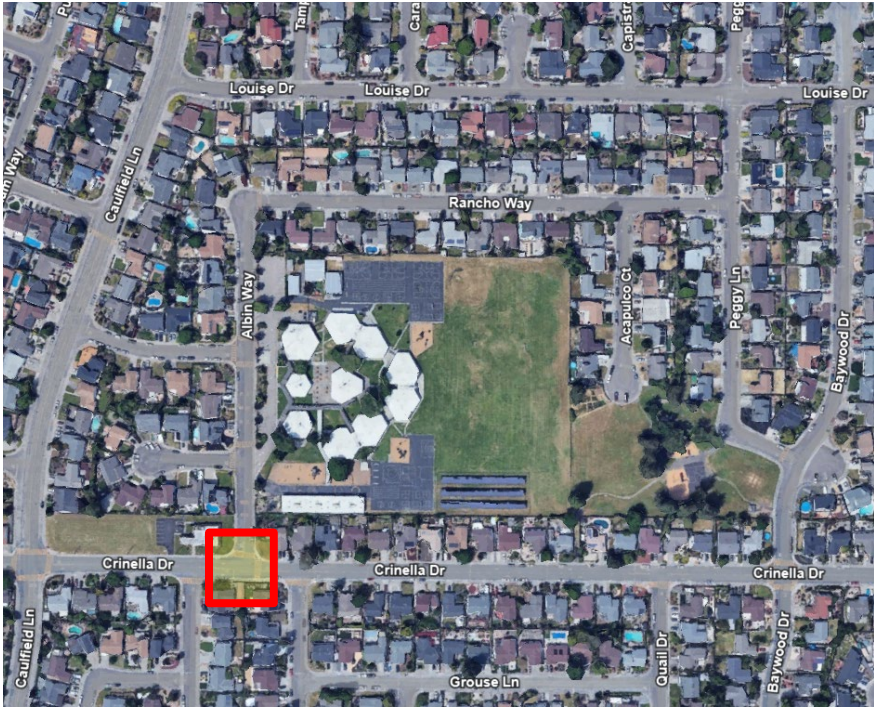




## Caulfield Lane & Crinella Drive

- Add red curb and bulbouts
- Intersection will be much easier to navigate with lane reduction on Caulfield Lane





## Crinella Drive & Albin Way

- Add red curb and bulbouts



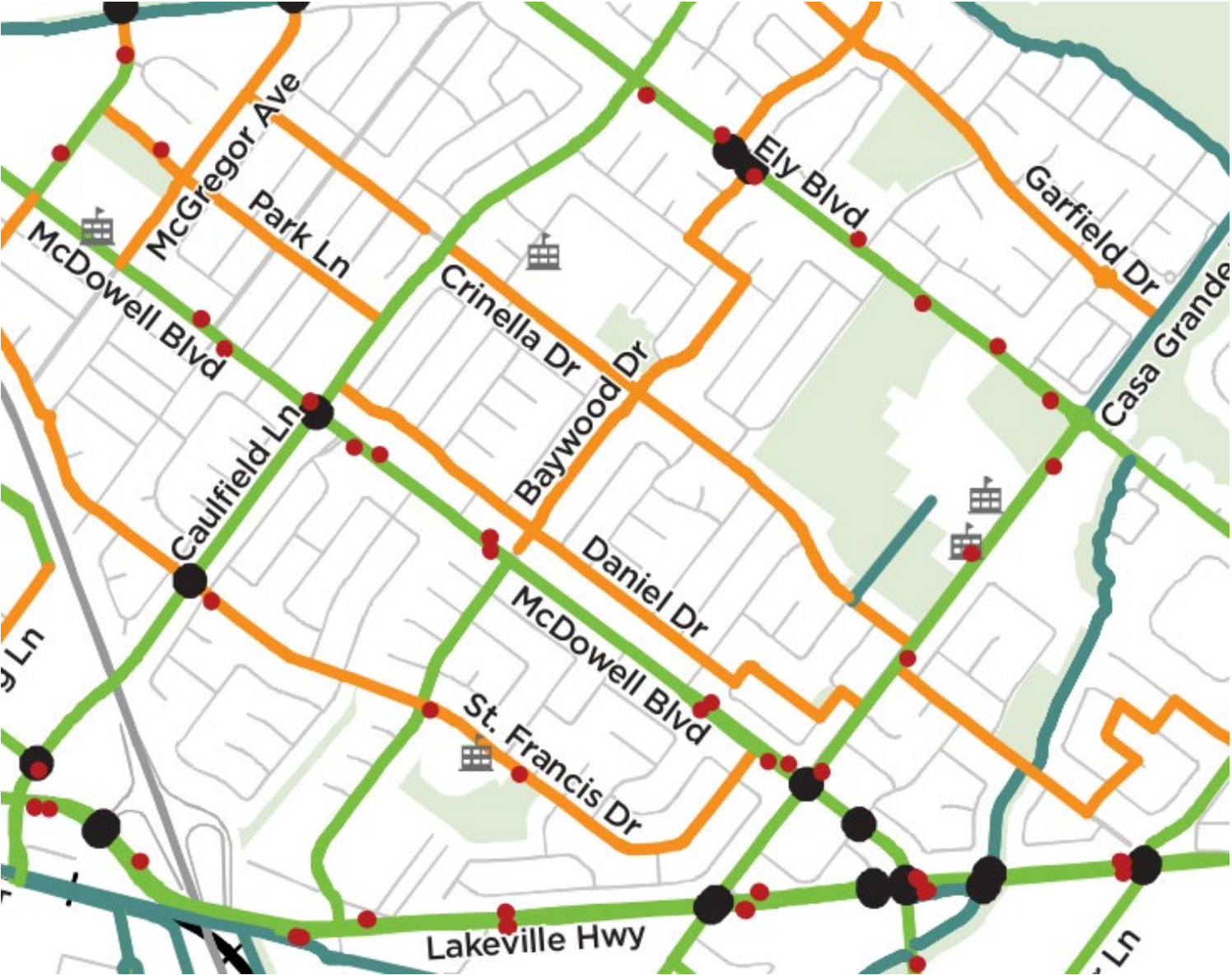


## Crinella Drive

- Complaints about speeding and cut-through traffic
- Envisioned as neighborhood greenway (low traffic, low speed street with priority for people walking & bicycling; alternative to Ely Blvd. S and S. McDowell Blvd.)



- On-Street Bike Lanes - painted on pavement with or without buffers or barriers from vehicle traffic
- Neighborhood Greenways - signage, lane markings, and traffic calming measures on small, residential streets for bikes and vehicles to share the road





# Additional Feedback

---

- *Add notes here*



# Remaining Task Force Dates & Schools for 2023-24 School Year

---

- May 16: Miwok
- June 20: Casa Grande



# Contact Information & Resources

---

- Transportation Planning & Engineering: [safestreets@cityofpetaluma.org](mailto:safestreets@cityofpetaluma.org)
- Petaluma Transit: [transit@cityofpetaluma.org](mailto:transit@cityofpetaluma.org) / 707-778-4460 / [transit.cityofpetaluma.net](http://transit.cityofpetaluma.net)
- City Bike Map: [cityofpetaluma.org/bikemap](http://cityofpetaluma.org/bikemap)
- Report an Issue (Hazards & Quick Fixes): [cityofpetaluma.org/issues](http://cityofpetaluma.org/issues)
- Safe Streets Nomination Program (Traffic Calming & Safety Improvements): [cityofpetaluma.org/ssnp](http://cityofpetaluma.org/ssnp)
- Slow the Fast Down Campaign: [cityofpetaluma.org/slowthefastdown](http://cityofpetaluma.org/slowthefastdown)



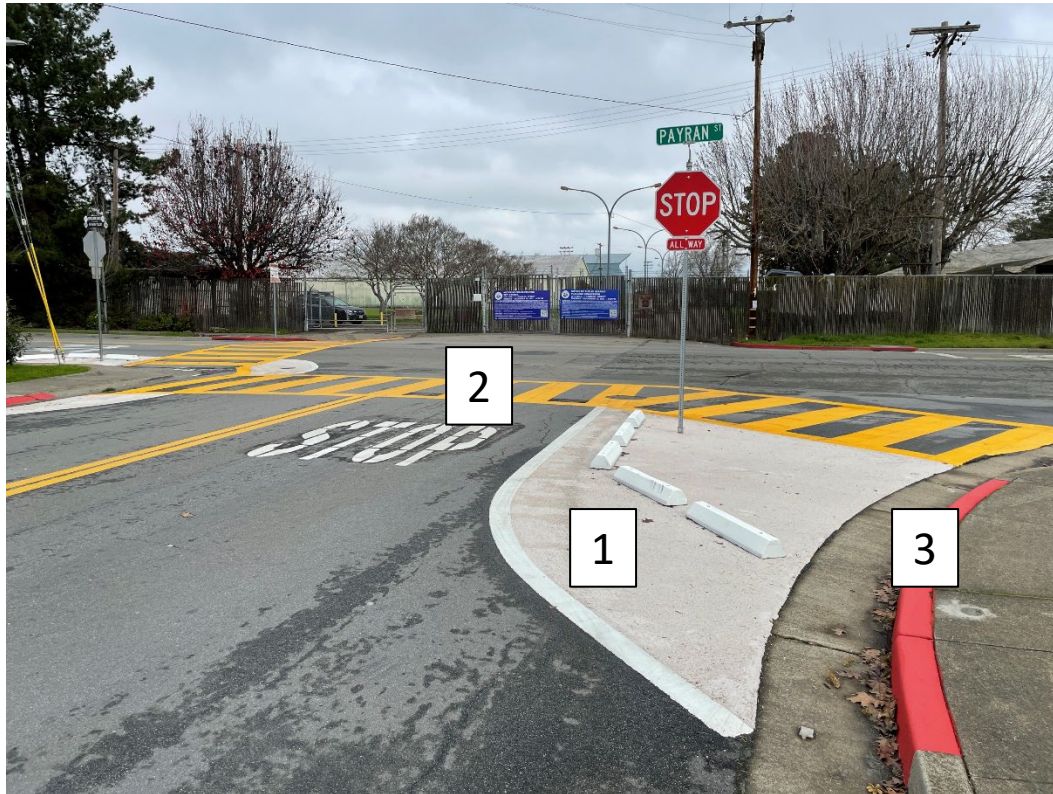
# Walk Audit Recommendations

---

Please note that all recommendations are meant to capture **possible** solutions to issues or ideas raised during the walk audit. Each of these recommendations are subject to additional design, analysis, outreach, funding, prioritization, and approval by the City and/or Petaluma City Schools prior to implementation.



# Typical Intersection Enhancements



- 1) Painted curb extension (“bulbout”)
- 2) Ladder crosswalk; yellow for school zone
- 3) Parking prohibition (“daylighting”)

# Typical Intersection Enhancements

---



- 1) Concrete curb extension (“bulbout”)
- 2) Rapid-flashing beacon