



# Active Transportation/ SRTS improvements update



SRTS Task Force

February 29, 2024

# Walking Audits

Please note that all recommendations from walking audits are meant to capture **possible** solutions to issues or ideas raised during the walk audit. Each of these recommendations are subject to additional design, analysis, outreach, funding, prioritization, and approval by the City and/or Santa Rosa City Schools prior to implementation.

# Intersection Improvements



# Sebastopol Road and West Avenue

- Add crossing on the West side headed north bound.
- Improves connectivity from Roseland Elementary to Boys and Girls Club



# Hearn Avenue and Burbank Avenue

Our preliminary construction schedule for this project is from October 2024 through March 2025. The preliminary schedule's large window is due to the project being in the early stages of acquiring the easements necessary to install the intersection improvements.



# Wright Charter School



Planned installation of crosswalk on the east side of Wright Road crossing Finley Avenue. Field crews to install once weather permits

# Reporting Concerns



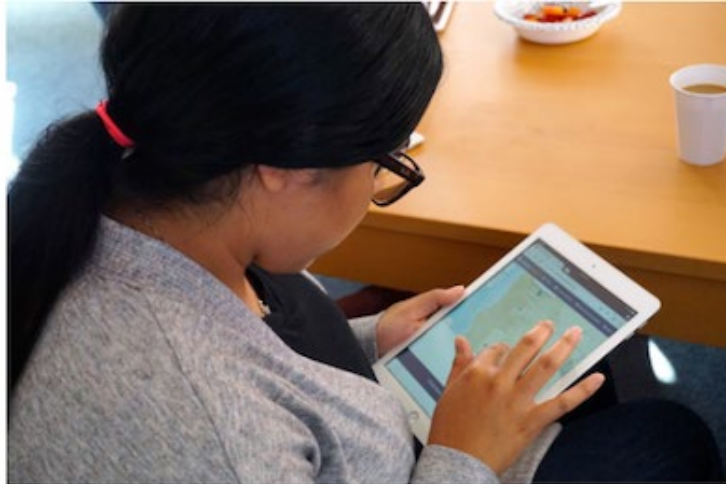
# My Santa Rosa



<https://www.srcity.org/3661/MySantaRosa>



# Street Story



<https://streetstory.berkeley.edu/>

# Active Transportation Plan

- Engagement in south Santa Rosa
- Existing conditions
- Recommendations
- Interactive map

Click "View Legend" above to reveal the legend. Each color corresponds to a specific facility type, such as bike lanes and multi-use paths.

See the [visual glossary](#) for details about different bicycle lanes and types of pedestrian-related improvements.

Use the buttons below to provide feedback on destinations you'd like to walk, bike, or roll to, routes that function well or need improvement, and barriers to walking, biking, or rolling.

- Destinations
- Routes that work well or that you frequent
- Barriers to walking, biking, or rolling
- Missing or damaged sidewalks
- Missing or damaged trails

The solid lines on the map represent existing facilities (ex. Bike lanes, separated facilities, sidewalks, etc.). Check out the map to see what other visitors have already suggested and click or tap any point or route to see more details. If someone has placed a point or route that you agree with, click its "Like" button to show your support.

