

Corona Creek, Kenilworth, & Sonoma Mountain Walk Audits

SAFE ROUTES TO SCHOOL TASK FORCE

JANUARY 16, 2025

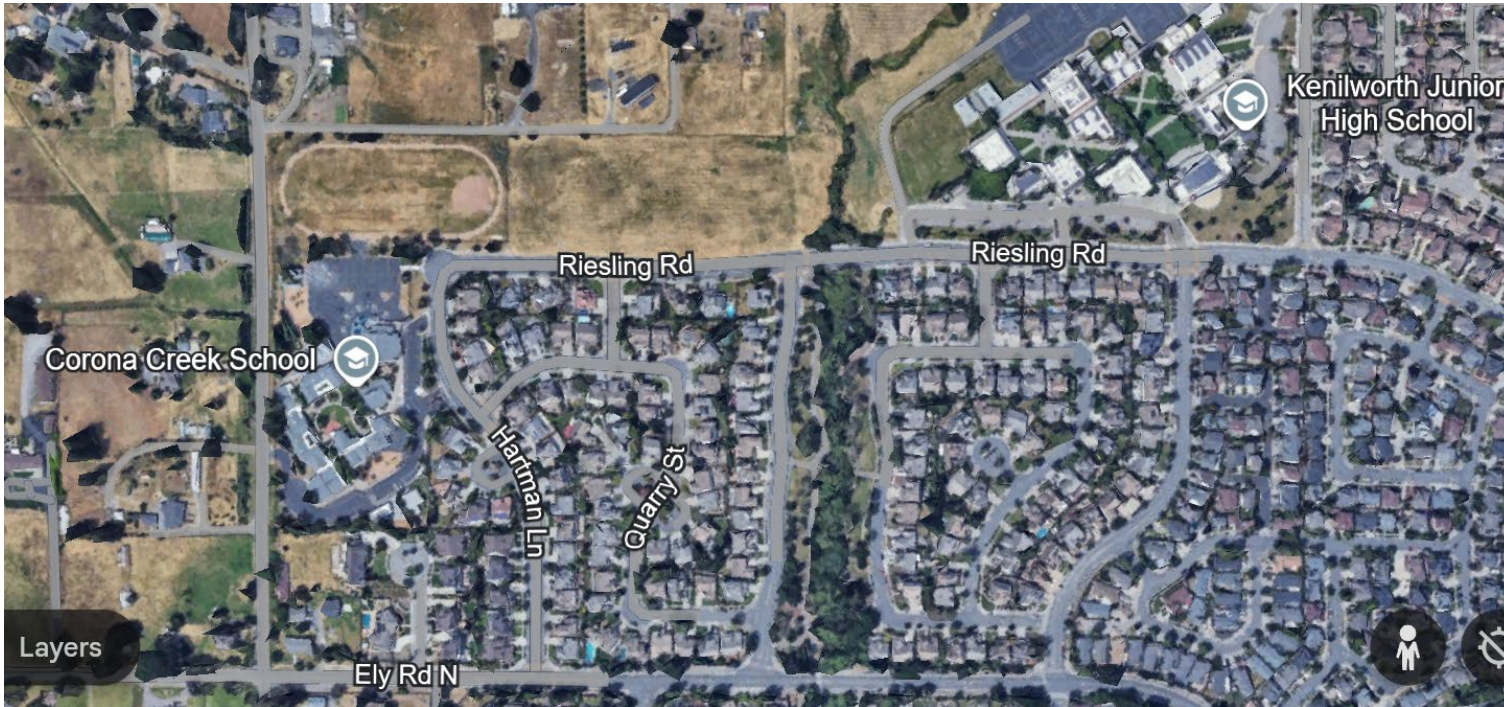


Quick-Build Bulbouts / Curb Extensions



Improve visibility, shorten crossing distance, slow vehicle turning movements

Corona Creek & Kenilworth



- Thursday, December 12, 2:15 PM
- Participants from Safe Routes to Schools, City (Public Works & Police), Corona Creek, Kenilworth, Waugh SD, & neighborhood
- Focused on Riesling Rd, Ely Rd N, & Hartman Ln

Campus Access Points: Kenilworth

- 1) Riesling Road
- 2) Dover Lane





Riesling Road at Dover Lane

Traffic waiting to enter school driveway observed impeding northbound traffic on Riesling Road

Potential Improvements:

- Consider installing part-time loading zone between Dover Lane and school driveway



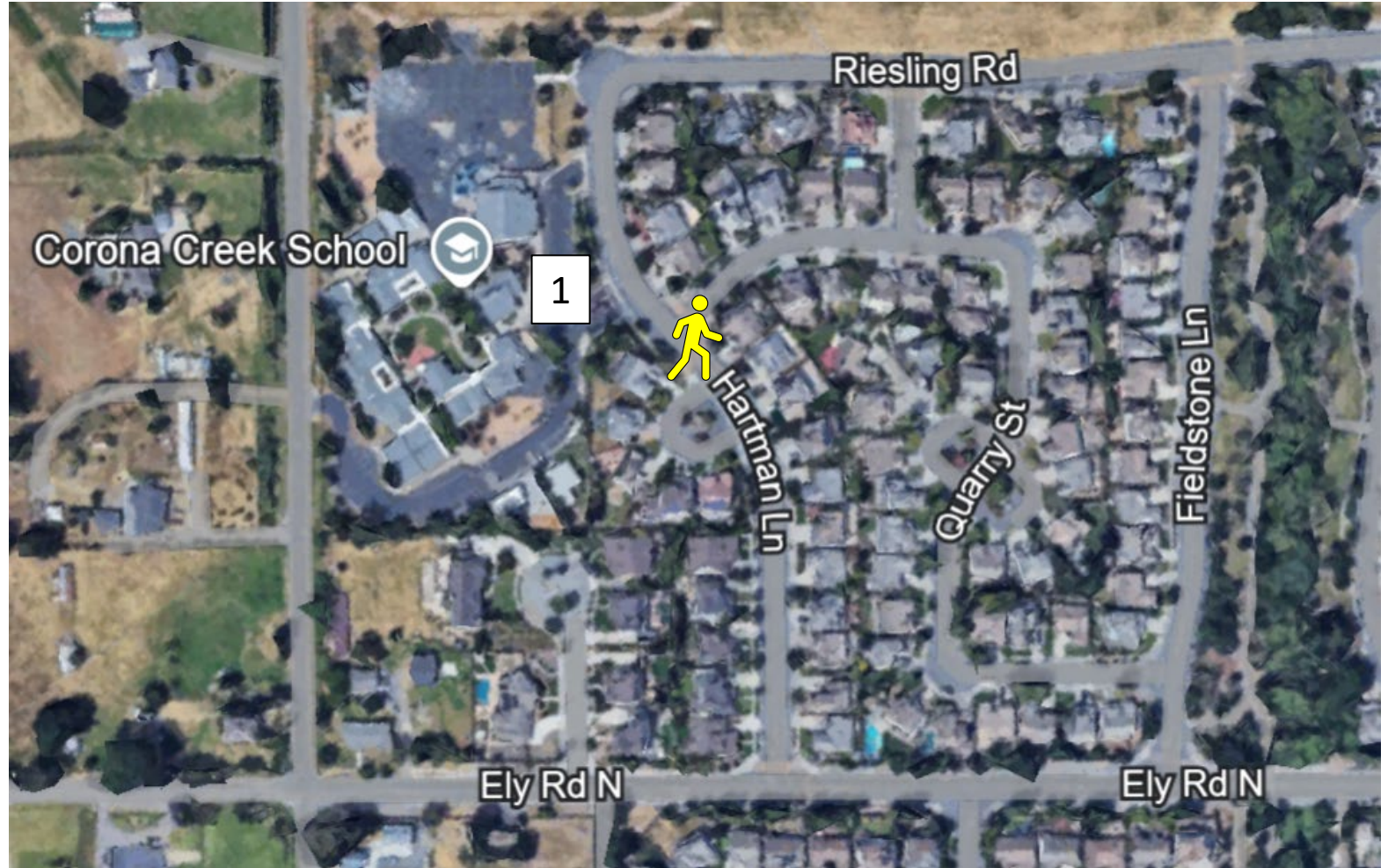
Riesling Road at Corona Creek Trail

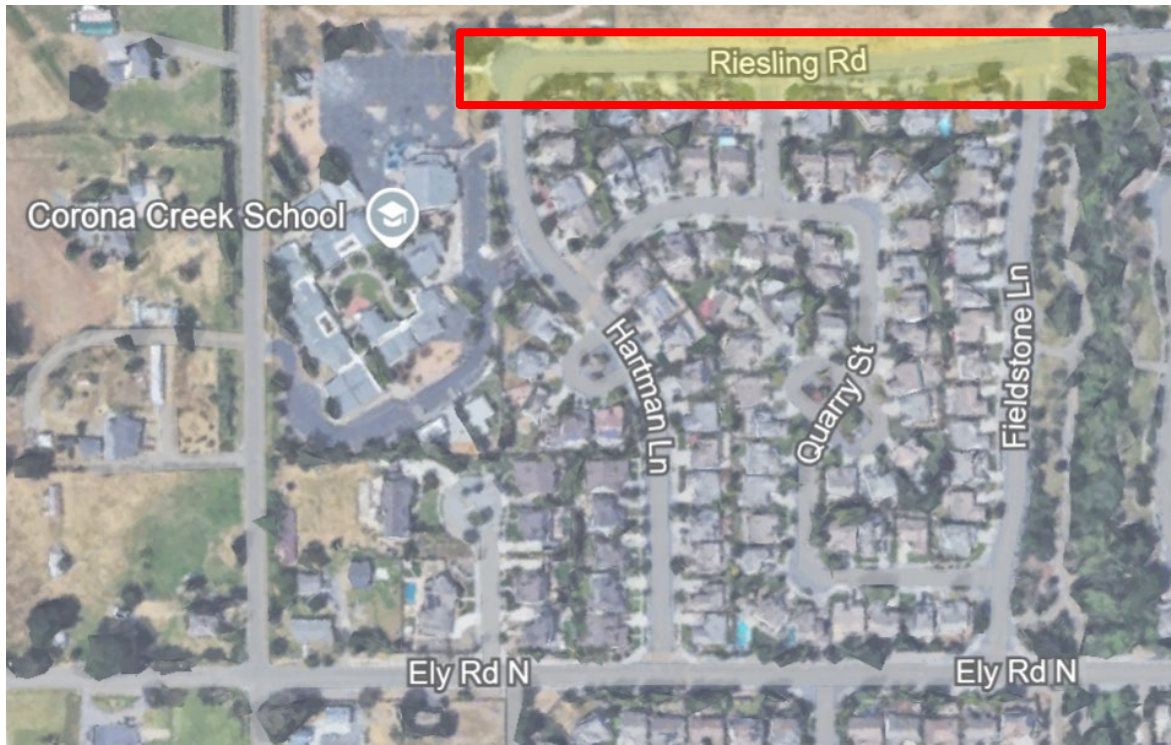
- Repair rough section of asphalt near Corona Creek Trail crossing
- Add bulbouts and improve signage at crosswalk



Campus Access Points: Corona Creek

1) Hartman Lane



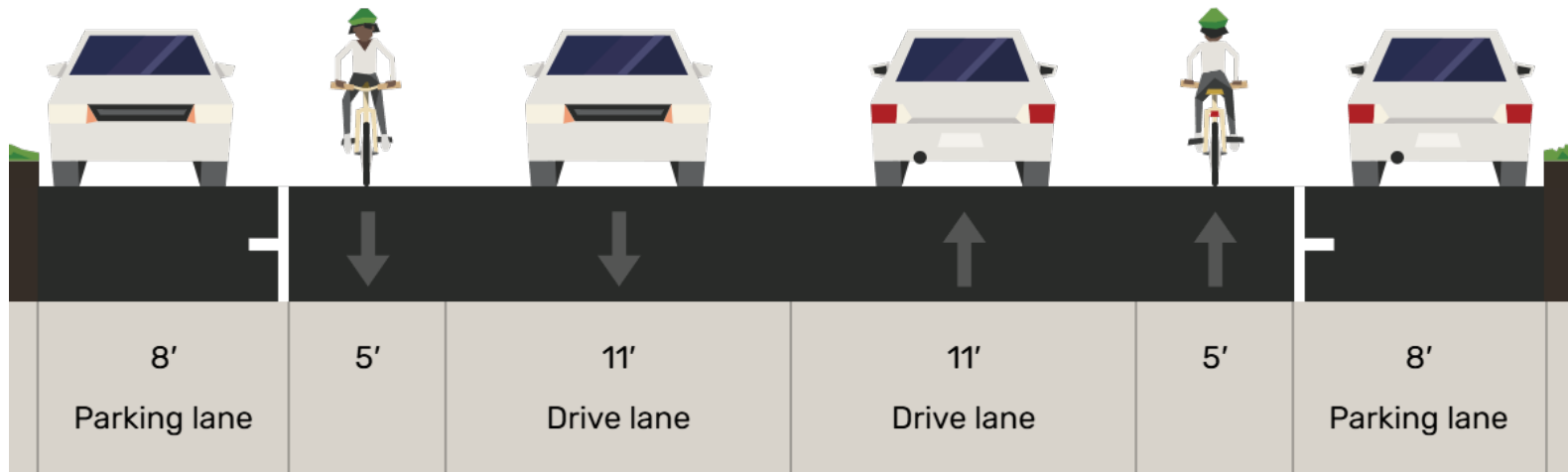


Riesling Road

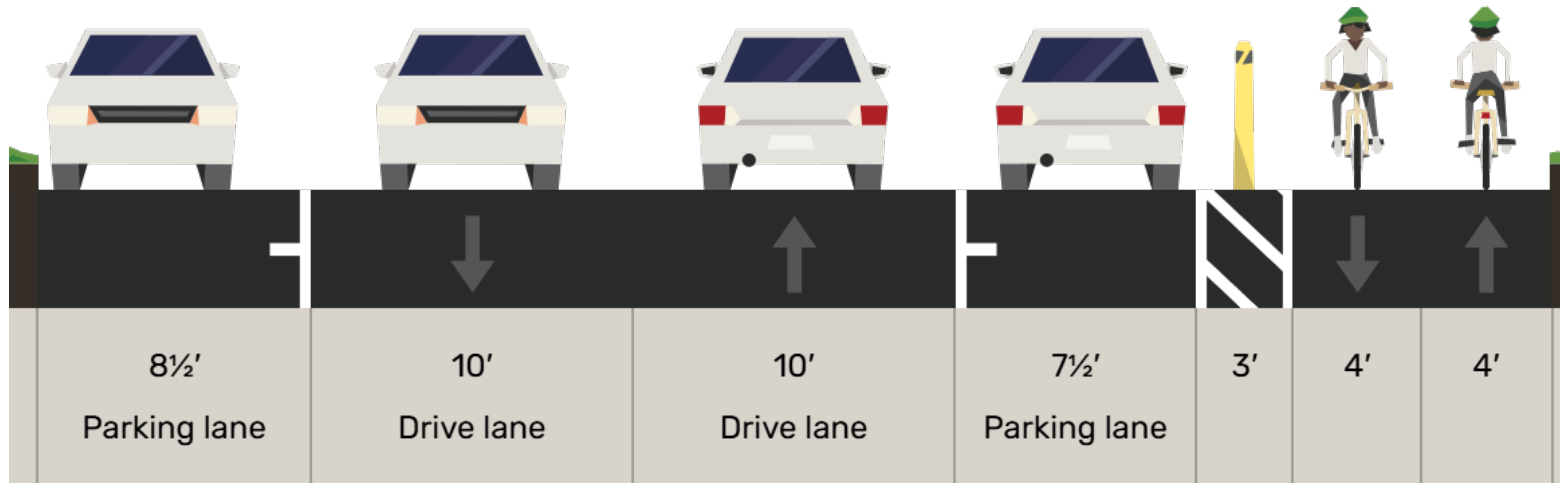
Gap in sidewalk forces kids to walk in what is currently a parking lane between Corona Creek and Kenilworth

Potential Improvements:

- Near-term: quick-build multi-use pathway using existing roadway width
- Long-term: construct new off-street pathway



Existing Configuration (facing toward Corona Creek)



Potential Quick-Build Configuration



Hartman Lane – Riesling Road Curve

Desire for better delineation of curve and ensuring vehicle lanes are kept clear during pick-up and drop-off; potential to utilize cul de sac curb as loading zone



Main Entrance on Hartman Ln

Desire for additional crosswalk along school frontage; existing crosswalk at Quarry Street is not convenient for all



Hartman Ln @ Ely Rd N

Complaints of speeds on and challenges crossing Ely Rd N; left turn prohibition on school days creates circuitous detour

Potential Improvements:

- Near-term: bulbouts, pedestrian refuge island
- Long-term: explore feasibility of roundabout

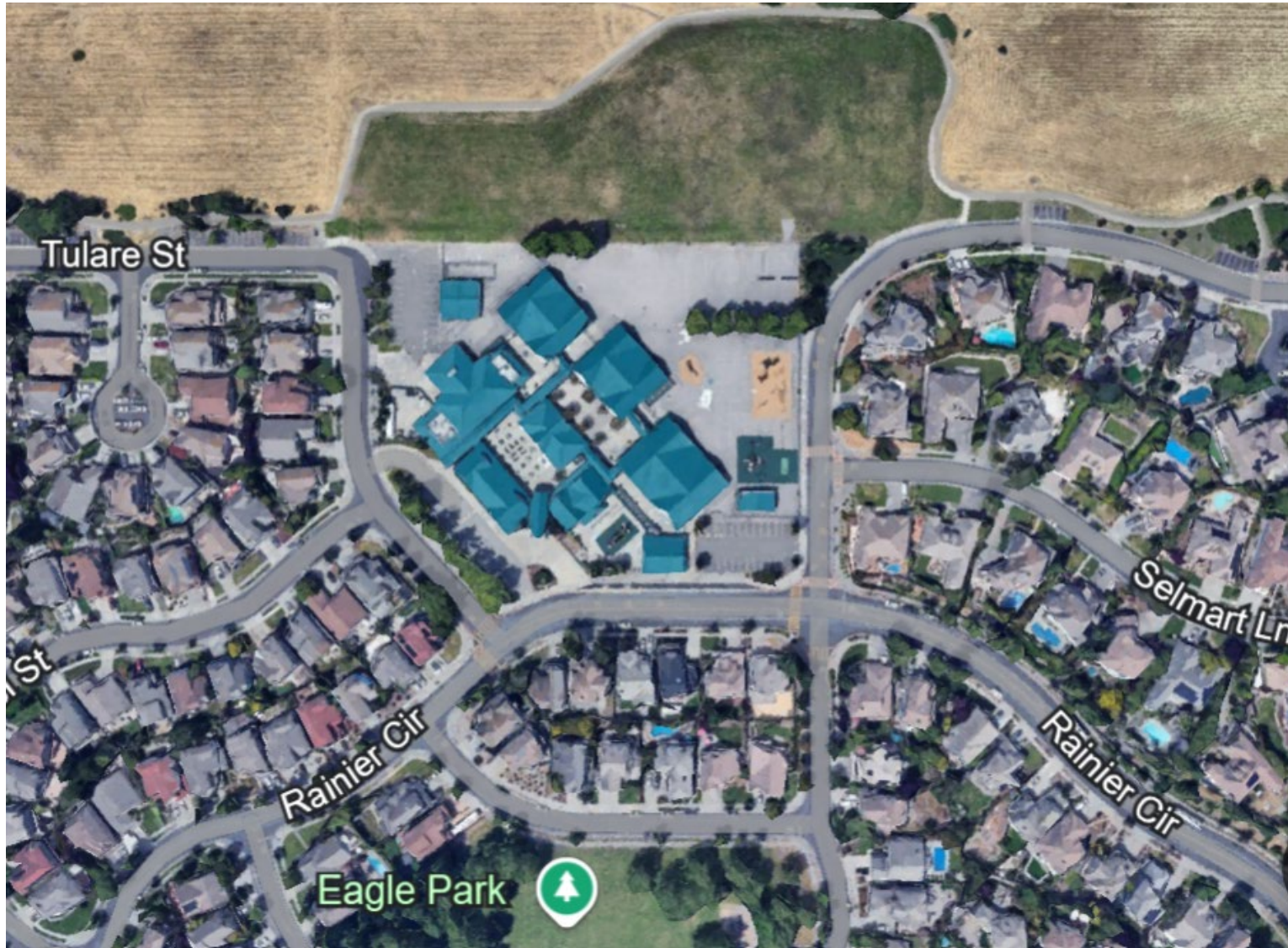


Corona Creek Trail at Ely Rd N

Complaints of speeds on and challenges crossing Ely Rd N

Potential Improvements

- Add flashing beacon and refuge island

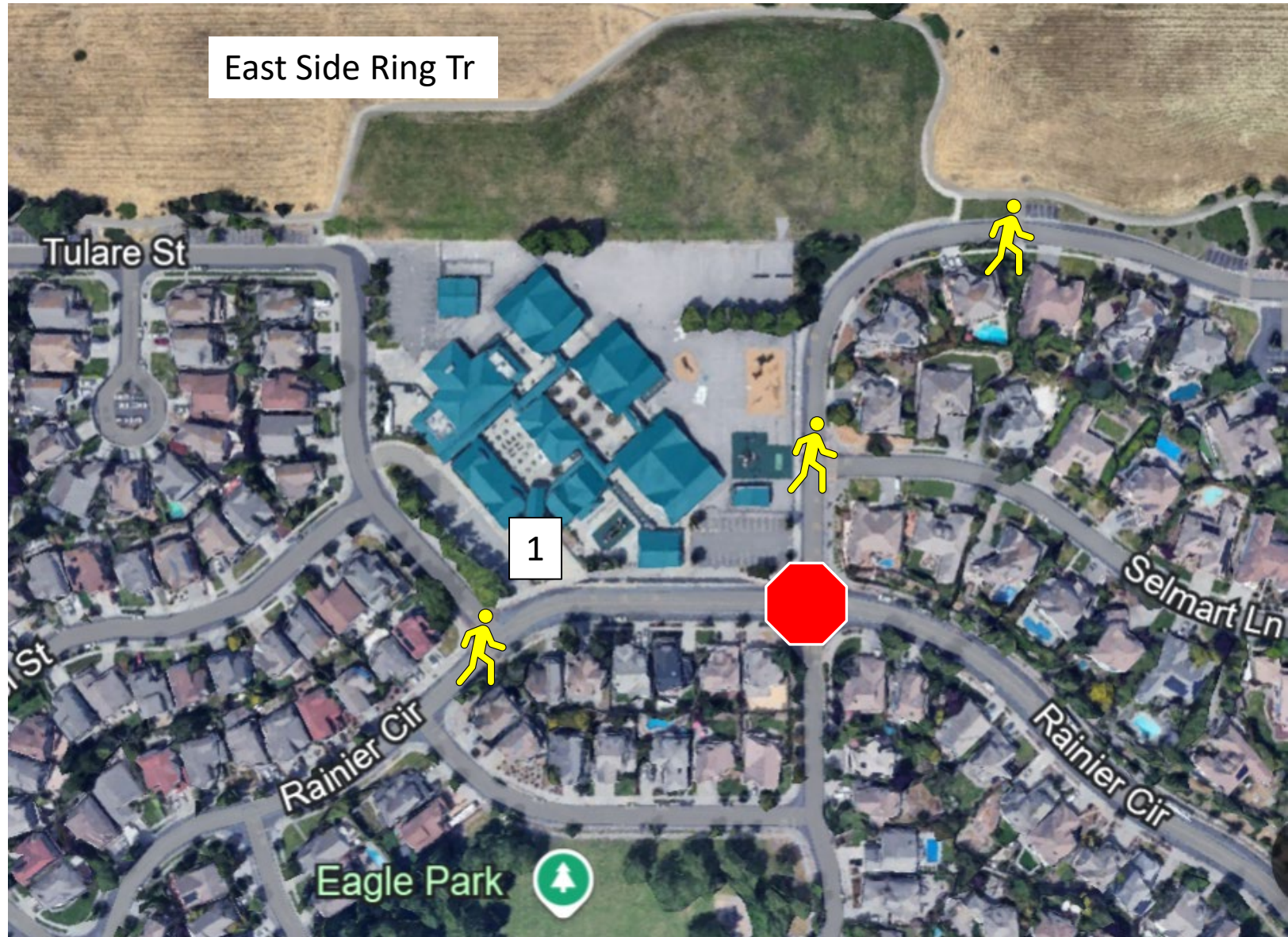


Sonoma Mountain

- Tuesday, January 14, 2:30 PM
- Participants from Safe Routes to Schools, City (Public Works & Police), Sonoma Mountain
- Focused on Rainier Circle, Matzen Ranch Circle

Campus Access Points: Sonoma Mountain

1) Rainier Circle



Sonoma Mountain Improvements

- Add bulbouts and median signs to crosswalks at Selmart Lane/Matzen Ranch, Tulare Street/Rainier Circle, and Matzen Ranch/Rainier Circle
- Narrow vehicle lanes and improve bike lanes from Sonoma Mountain Parkway to Tulare Street

Contact Information & Resources

- Transportation Planning & Engineering: safestreeets@cityofpetaluma.org
- Petaluma Transit: transit@cityofpetaluma.org / 707-778-4460 / transit.cityofpetaluma.net
- City Bike Map: cityofpetaluma.org/bikemap
- Report an Issue (Hazards & Quick Fixes): cityofpetaluma.org/issues
- Safe Streets Nomination Program (Traffic Calming & Safety Improvements): cityofpetaluma.org/ssnp
- Slow the Fast Down Campaign: cityofpetaluma.org/slowthefastdown

Walk Audit Recommendations

Please note that all recommendations are meant to capture **possible** solutions to issues or ideas raised during the walk audit. Each of these recommendations are subject to additional design, analysis, outreach, funding, prioritization, and approval by the City and/or Petaluma City Schools prior to implementation.