



# City of Santa Rosa Active Transportation update



SRTS Task Force

June 3, 2025

# Infrastructure Improvements





# Lincoln Elementary





# R.L. Stevens Elementary





# Montgomery High School





# Roseland Elementary





# Luther Burbank Elementary



# Bike Buses and Walking Buses





# Benefits

- Creates a sense of community
- Encourages working together
- Encourages getting to know your neighbors.
- Creates less traffic at school pickup and drop off
- Reduces environmental impacts
- Has health benefits
  - Physical, mental, and social health, and can also set lifelong habits for well-being.

[National Bike to School day options](#)

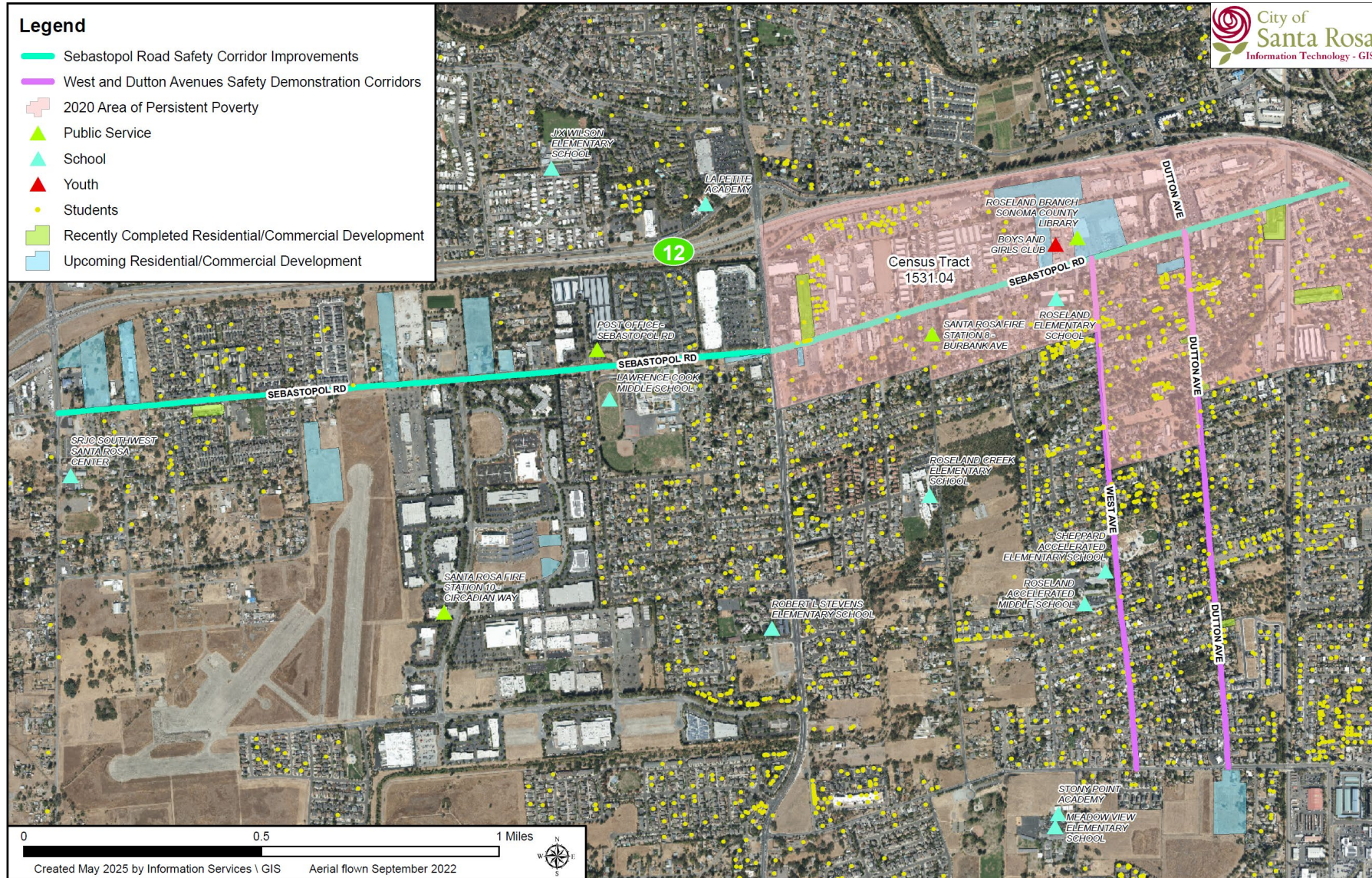


# Ongoing efforts





# GIS Map Utilized for Grant Application





# Funding Sources

- TDA Article III
- Slurry/ pavement maintenance projects
- SS4A

