

METROPOLITAN
TRANSPORTATION
COMMISSION

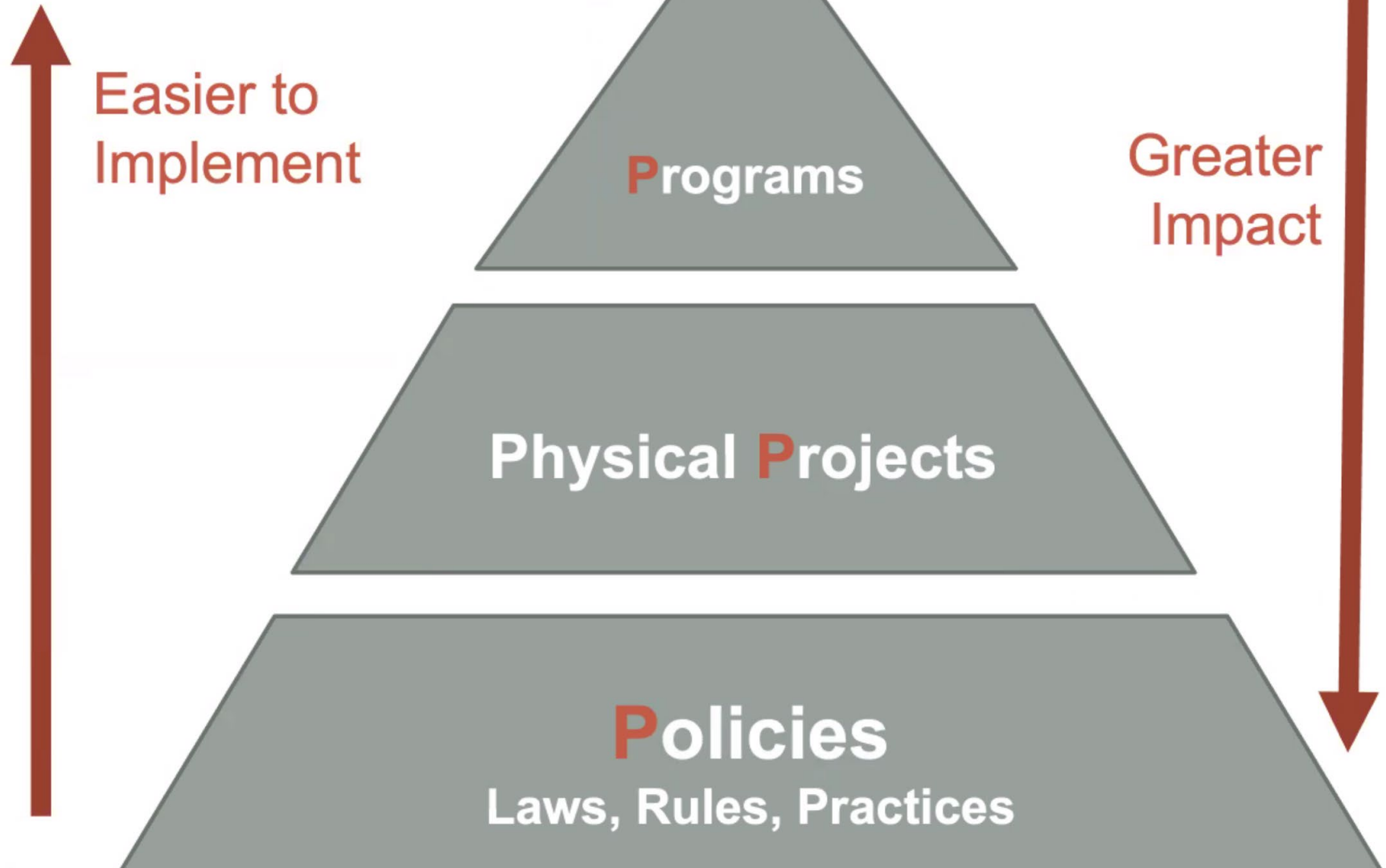
2024

FEB/MAR '24

SAFE ROUTES TO SCHOOL PROGRAM



Three Ps for change:



WALK AUDIT/SRTS SITE ASSESSMENTS

- Sequoia Elementary – 9/11/23
- Austin Creek Elementary – 12/4/23
- Lincoln Elementary – 1/10/24
- Brook Hill Elementary – 2/13/24
- JX Wilson – 2/26/24
- Helen Lehman Elementary – 3/11/24
- Kawana Springs Elementary – 4/2/24
- Monroe Elementary – 5/7/24
- One more site in 23-24 (late April-May)?
- 24-24 sites...begin in Aug or Sept?

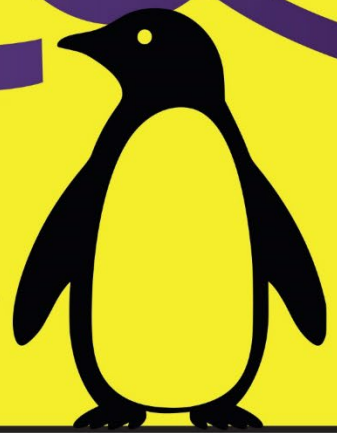
SRTS ED ACTIVITIES IN SANTA ROSA– MARCH 24

2 nd or 3 rd Grade Ped Safety Lessons	4 th Grade Bike Basics Lessons	Middle School
Meadow View (3/7 & 3/14)	Madrone Elem (3/4 & 3/11)	Spring Lake Middle School (3/4, 3/7, 3/8, 3/11)
	Binkley Elem (3/4 & 3/11)	
	Austin Creek Elem (2/27 & 3/5)	
	RL Stevens (3/5 & 3/26)	Community
	Cesar Chavez Language Academy (3/12 & 3/26)	Kids Learn to Ride workshop, Finley Park (3/20)

CELEBRATE With SAFE ROUTES TO SCHOOL

WALK & ROLL

MARCH of the PENGUINS



COMPLETE OUR MARCH OF THE PENGUINS Win a pair of Binoculars!

TRACHER

WALK, ROLL, LEARN ABOUT PENGUINS AND/OR CALIFORNIA BIRDS
JOIN US FOR WALK & ROLL TO SCHOOL DAY
FIRST WEEK OF MARCH!



METROPOLITAN TRANSPORTATION COMMISSION

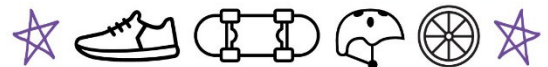


FOR ACTIVITIES & TO ENTER, VISIT:
sonomasaferroutes.org

CELEBRATE WALK & ROLL MARCH of the PENGUINS Month



Win a pair of BINOCULARS!



SAFE ROUTES TO SCHOOL

WALK & ROLL MARCH of the PENGUINS

WEDNESDAY

MAR 6th

SAFE ROUTES TO SCHOOL

WALK & ROLL

MARCH of the PENGUINS

CHALLENGE



MARCH of the PENGUINS

Track your miles this March while learning about penguins and/or California or western birds. **Can you make it to Antarctica?** How about to and from? Turn in your tracking sheet to Safe Routes to Schools by Friday, April 5th for a chance to win a pair of binoculars!

MILES TO ANTARCTICA FROM CALIFORNIA: ~8900

How to achieve "Penguin Miles" to Antarctica:

1 mile of walking/biking = 200 Penguin Miles

New bird observation = 100 Penguin Miles

Read a book about penguins or California/western Birds = 100 Penguin Miles (each book)

Watch the documentary *March of the Penguins* (Apple TV) or *The Sub-Zero World of Penguins* (YouTube) = 100 Penguin Miles (each movie)

Watch the YouTube Videos "California Birds" Episodes 1 &/or 2 (each video) = 100 Penguin Miles

(or another documentary on California or western Birds)

PENGUIN MILES TRACKER

of miles you walked or rolled to school or anywhere each day in March, plus observations and books/documentaries (attach extra sheets if needed)

MILES OF WALKING/BIKING			BIRD OBSERVATIONS		
DAY/WEEK OF MONTH	# OF MILES	PENGUIN MILES (# of miles x 200)	DESCRIPTION	BIRD TYPE? (take a guess!)	PENGUIN MILES (100 per bird)
<i>Ex. 3/3 or week of 3/3-3/9</i>	<i>1.5</i>	<i>300</i>	<i>Ex. Big, all black, loud caw</i>	<i>crow</i>	<i>100</i>
TITLE OF BOOK READ (100 each)		PENGUIN MILES	TITLE OF DOCUMENTARY WATCHED (100 each)		PENGUIN MILES
TOTAL PENGUIN MILES			TOTAL PENGUIN MILES		



METROPOLITAN TRANSPORTATION COMMISSION



STUDENT NAME _____ SCHOOL _____ HOME ROOM TEACHER _____ GRADE _____

Submit completed Penguins Mile Tracker via email to saferoutes@bikesonoma.org, or via mail to SRTS, PO Box 3088, Santa Rosa, CA 95402. Entries received by Friday, April 5th will be entered into a drawing for binoculars!

sonomasaferroutes.org @sonomacountysaferroutes

Bike to School Day

REGISTRATION OPEN TIL 4/10/24

SONOMA COUNTY
MAY 2024



Why We Ride

Why biking is awesome!

How does biking help you?

How does biking help the world?

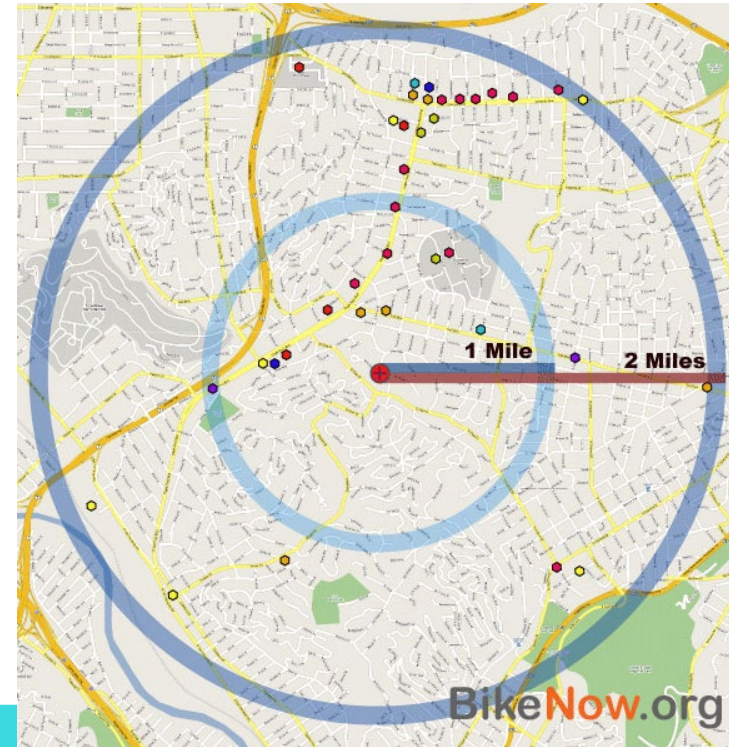


Fitting Biking Into Daily Routines

Nationwide, 40% of all trips are under 2 miles!

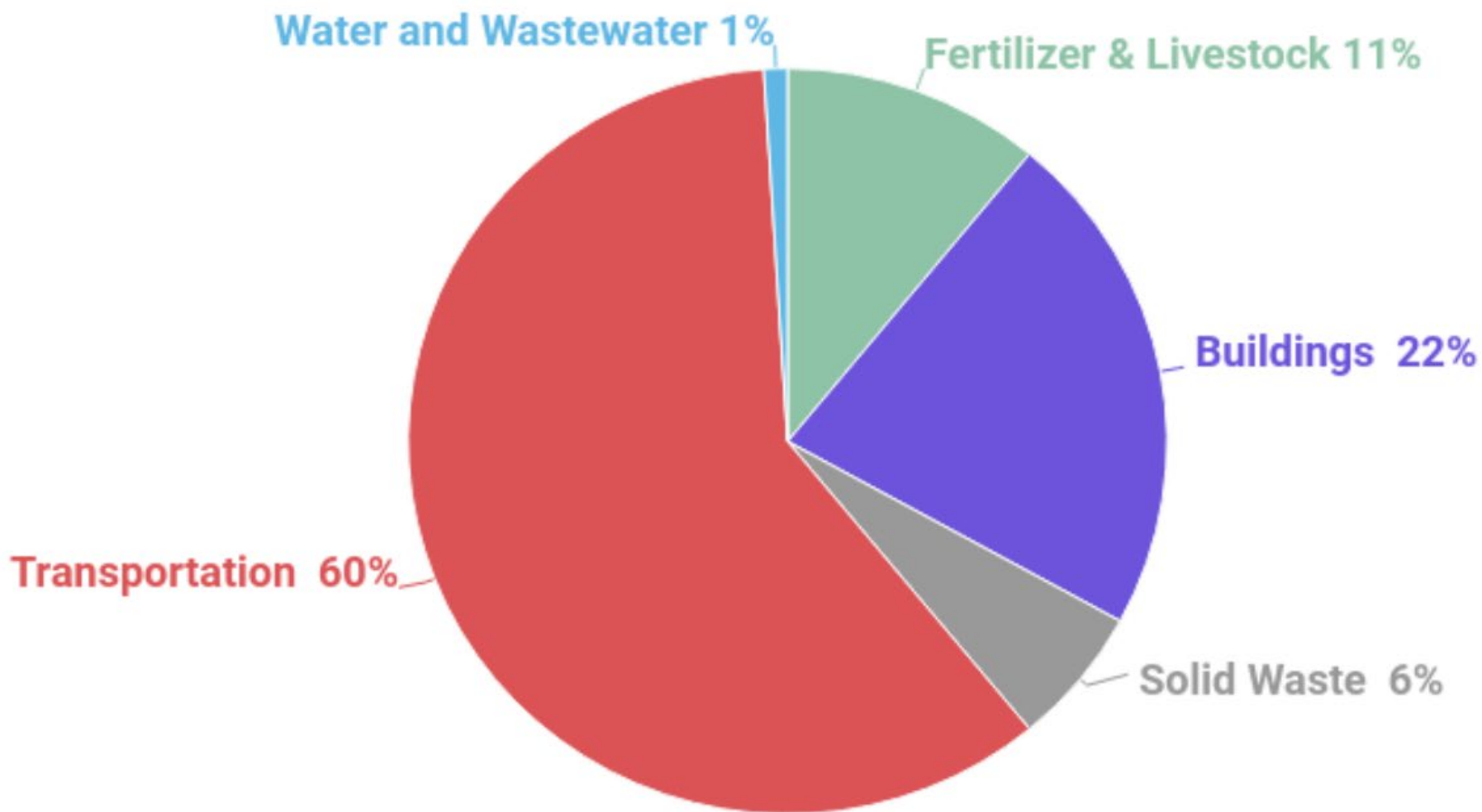
Think of all the places that are within about 2 miles of where you live!

- ✓ *Post office*
- ✓ *Grocery store*
- ✓ *Ice cream shop*
- ✓ *Library*
- ✓ *Park*
- ✓ *School*
- ✓ *Favorite café/restaurant*
- ✓ *Friend's house*



ANNUAL GHG EMISSIONS SONOMA COUNTY (RCPA)

2018 Greenhouse Gas Emissions by Sector



IT'S NOT SURPRISING....

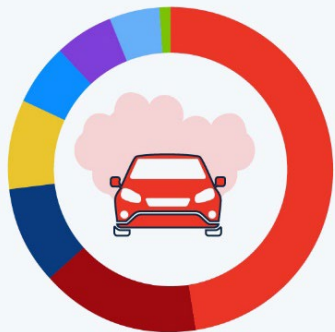


In 2000, more than 220 million cars are on the roads, this is more than one car per person over the age of 18!

ALSO....

Cars Cause Biggest Share of Transportation CO₂ Emissions

Estimated share of CO₂ emissions in the transportation sector worldwide in 2022, by transport type

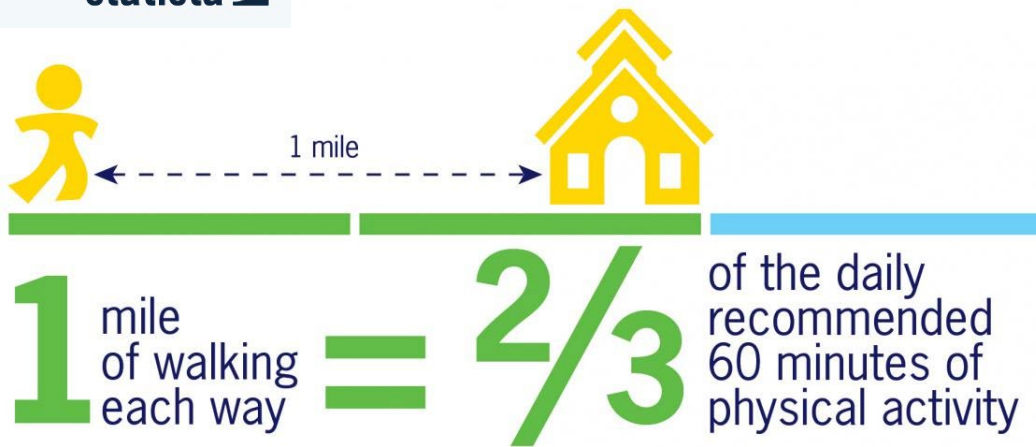
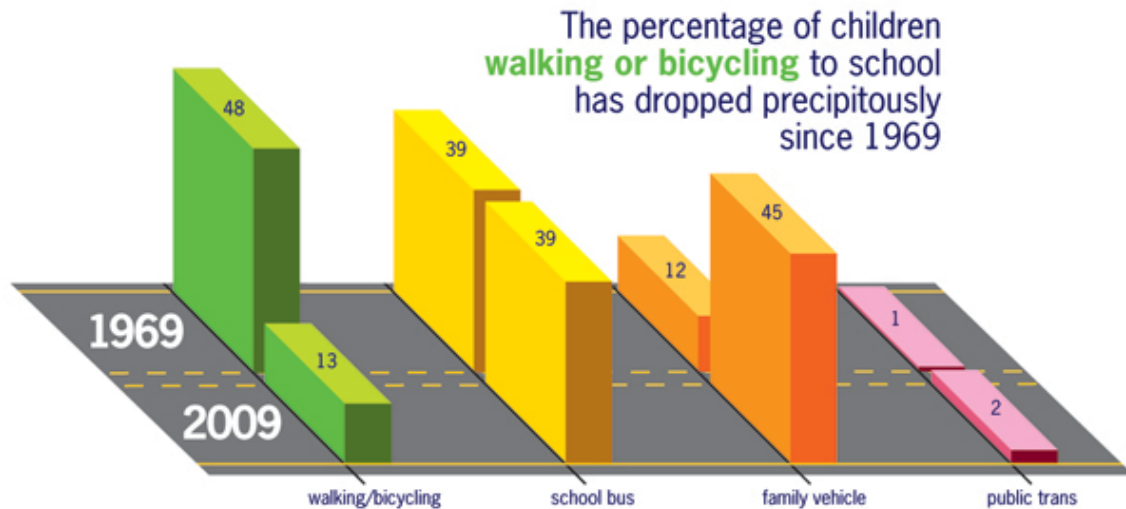


- Cars and vans
48%
- Heavy freight vehicles
16%
- International shipping
10%
- Medium freight vehicles
9%
- International aviation
6%
- Bus
6%
- Domestic aviation
5%
- Rail
1%

Source: IEA, Statista



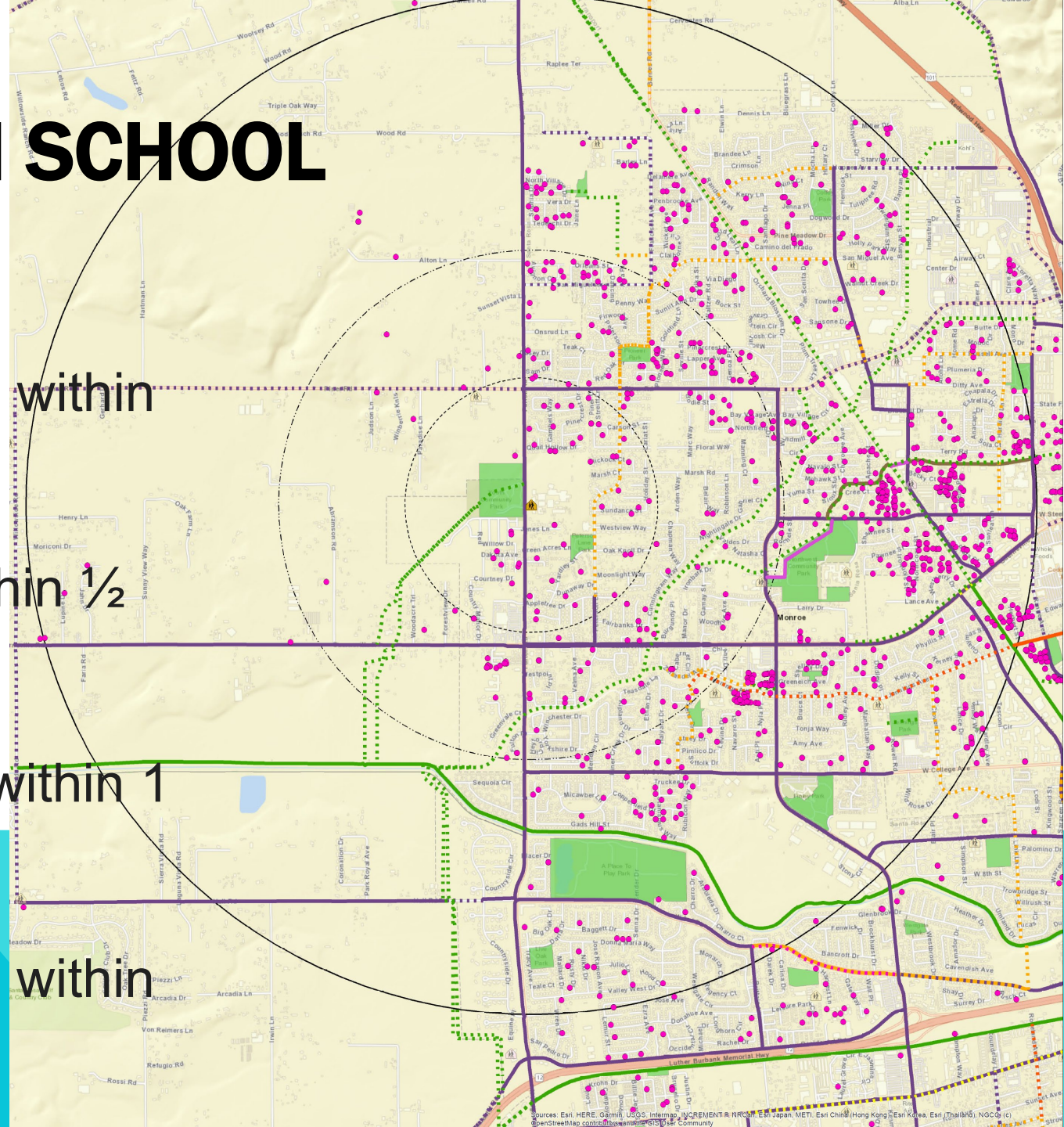
statista



GIS MAP: PINER HIGH SCHOOL

1383 geocoded

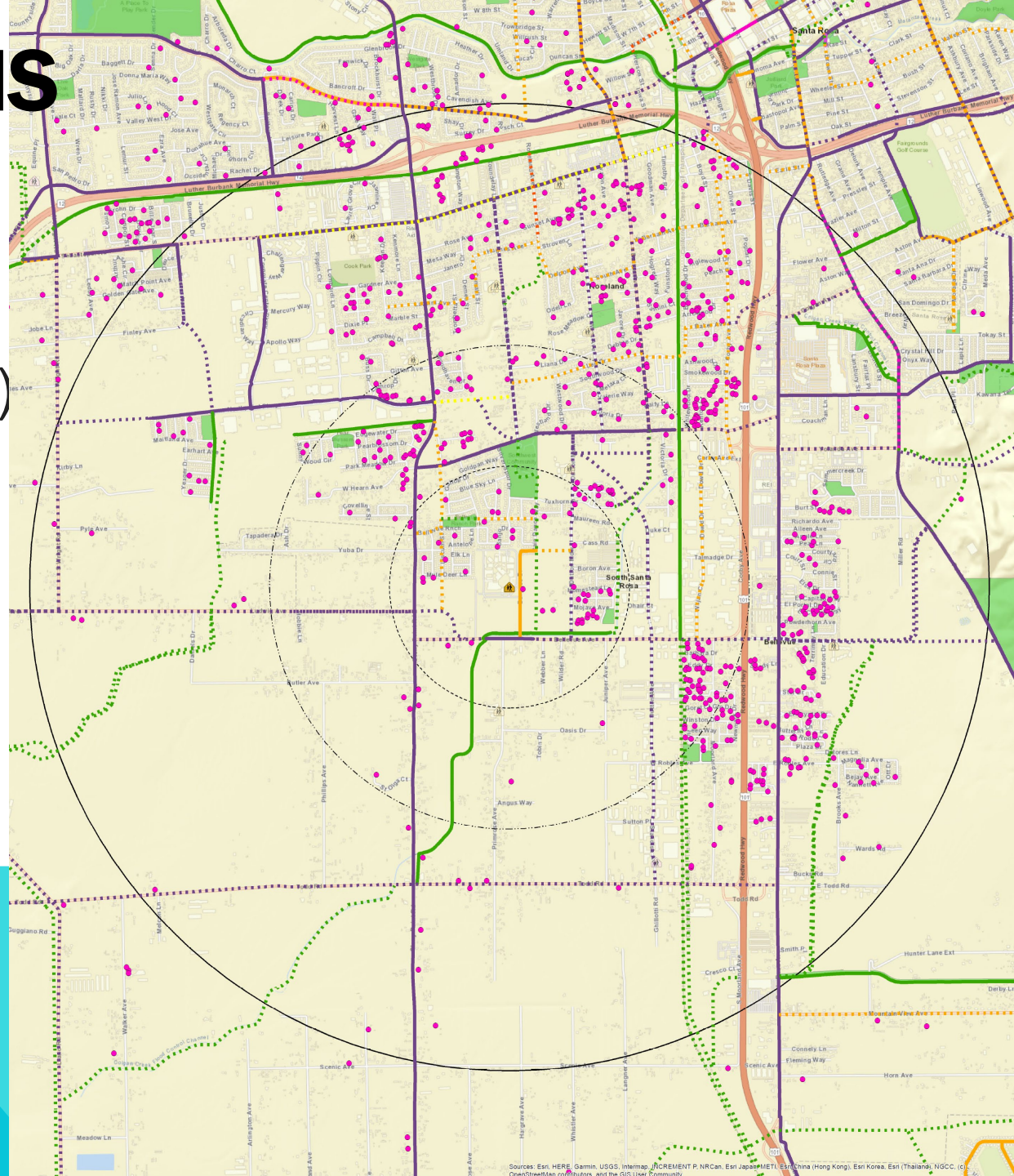
- 17 students live within $\frac{1}{4}$ mile (1%)
- 60 (4%) live within $\frac{1}{2}$ mile
- 251 (18%) live within 1 mile
- 1021 (74%) live within a 2-mile radius.



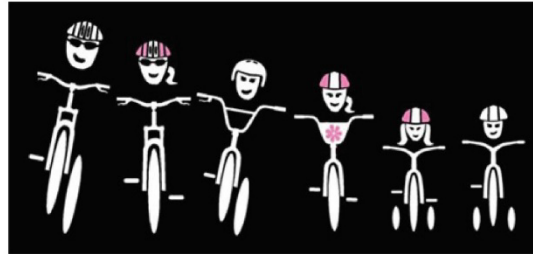
ELSIE ALLEN HS

879 Geocoded

- 8 students live within ¼ mile (.01%)
- 49 (.06%) live w/in ½ mile
- 214 (24%) live w/in 1 mile
- 680 (77%) live w/in a 2-mile radius.



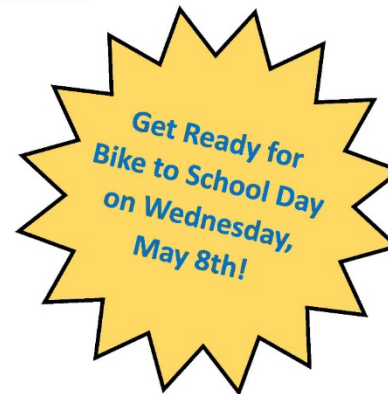
HOW TO START A BIKE TRAIN



Bike trains are a safe, fun way for kids to ride their bikes to school in groups. Join us (via Zoom) as local bike train leaders share experience and step-by-step advice on how to start and maintain your own successful bike-to-school effort!

Topics include:

- Establishing a meet-up spot
- Planning your route
- Keeping it safe
- Spreading the word
- Recruiting volunteers
- Making it fun!



Date: Wednesday, March 13th
Time: 6:30-7:30 p.m
Sign up: www.tinyurl.com/biketrainwebinar

