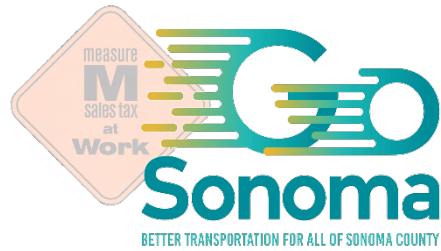


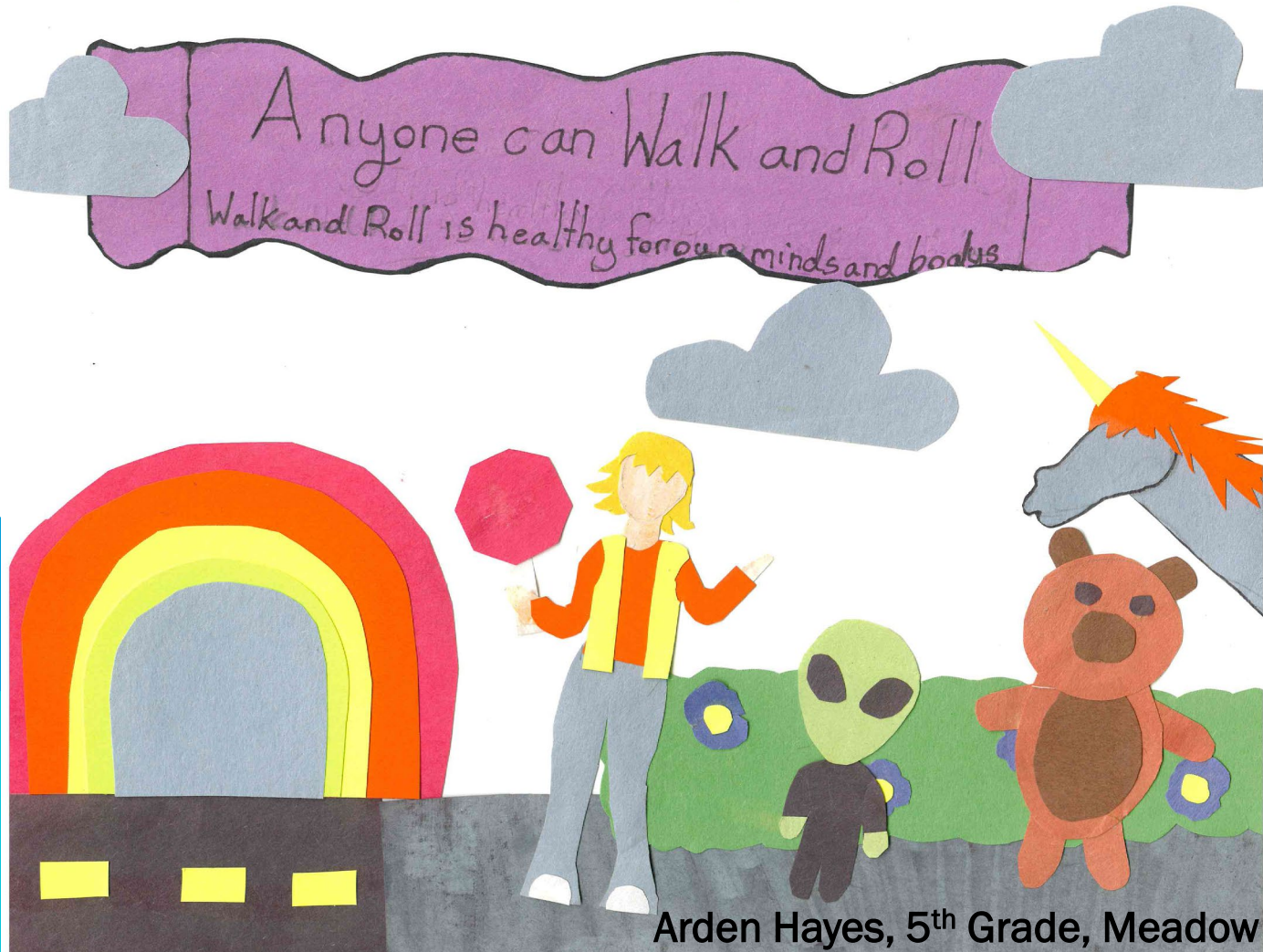
SAFE ROUTES TO SCHOOL



2025



METROPOLITAN
TRANSPORTATION
COMMISSION

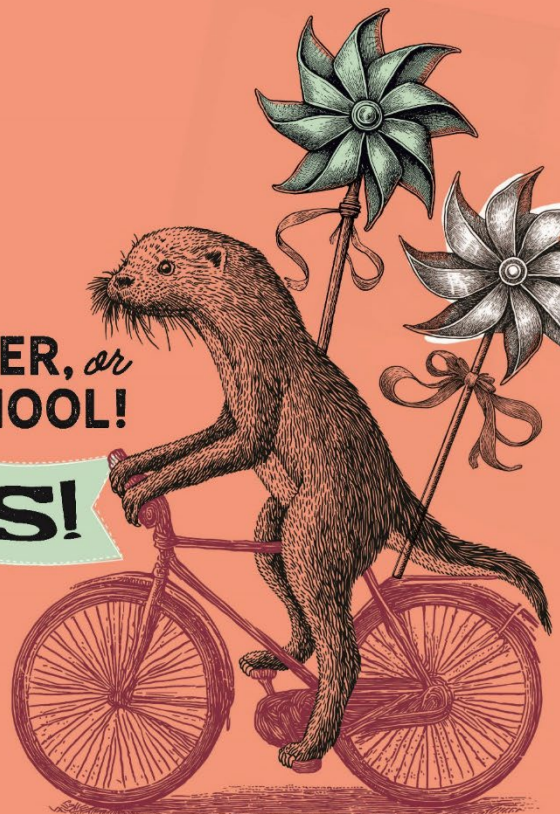


Arden Hayes, 5th Grade, Meadow

Celebrate **NATIONAL**
BIKE ^{TO} SCHOOL
DAY *WITH* **SAFE ROUTES TO SCHOOL**
WEDNESDAY, MAY 7

Bike...
WALK, SCOOTER, or
SKATE TO SCHOOL!

PRIZES!



to participate, visit
sonomasaferroutes.org



METROPOLITAN
TRANSPORTATION
COMMISSION



NATIONAL BIKE TO SCHOOL DAY
WALK & ROLL
TO SCHOOL DAY

WEDNESDAY
MAY 7

BIKE SAFETY
QUICK TIPS



Check the air, brakes & chain
before riding your bike

Wear and fasten your **helmet**

Be **visible**: Wear bright clothing
(and use your hand signals)

Communicate: Make eye contact
and use your hand signals

Be **predictable**: Ride in the same direction
as traffic and follow the rules of the road

SAFE ROUTES TO SCHOOL

PETALUMA PARTICIPATING SCHOOLS

School	# Bikes Before	# Bikes Day of Event	% increase
Corona Creek	8	19	138%
Grant	10	33	230%
Kenilworth Junior	25	53	112%
Live Oak	10	28	180%
Loma Vista	7	15	114%
Mary Collins at Cherry Valley	20	later in May	
McDowell	8	8	0%
McKinley	8	17	113%
McNear	20	63	215%
Meadow	26	53	104%
Miwok	5	12	140%
River Montessori	3	Not reported	
The Spring Hill	7	21	200%
Average Percentage Increase			140%

SRTS EDUCATION IN PETALUMA – MAY/JUNE 2025

- Learn to Ride class at Lucchesi – 5/7
- Loma Vista 4th Grade Bike Rodeo – 5/16
- McDowell 4th Grade Bike Rodeo – 6/2
- Learn to Ride class at Lucchesi – 6/4
- Family Bicycle Workshop at Lucchesi – 6/21



Sofia Summers, K, Meadow

FAMILY BIKE WORKSHOP

FREE!

Family Bike Workshops are for families with kids learning to ride on the road. Families will learn to safely navigate the streets in a variety of situations through fun, skill building activities and an instructional neighborhood ride.

SATURDAY, JUNE 21ST, 10:00am–12:30pm

Lucchesi Park
320 N McDowell Blvd, Petaluma

ADVANCE REGISTRATION REQUIRED

www.bikesonoma.org/family-bike-workshops (space is limited!)

QUESTIONS?

saferoutes@bikesonoma.org or 707-545-0153

- Bikes must be in working order.
- All cyclists must have a helmet to participate.
- Kids must be able to ride a two-wheel bicycle; younger children may participate in bike-seats, trailers, or trail-a-bikes.

Need a helmet or bike adjustment? Low cost and/or loaner helmets and/or free minor adjustments available, by request, to registered participants.



TOPICS COVERED

- Lane positioning and riding in the same direction as cars on the road
- Intersection right-of-way and crossings
- Obeying stop signs and traffic lights
- Hand signals
- Handling skills for safe riding



FAMILY BIKE WORKSHOP

FREE!

IN PERSON! ★ ★ ★ ★

Lucchesi Park

SATURDAY, JUNE 21ST

10am–12:30pm

Pre-Registration Required

www.bikesonoma.org/family-bike-workshops

TALLER FAMILIAR DE BICIS

GRATIS!

EN PERSONA! ★ ★ ★ ★

Lucchesi Park

SÁBADO, 21 DE JUNIO

10am–12:30pm

Se requiere preinscripción

www.bikesonoma.org/family-bike-workshops



2025-26 PETALUMA SRTS ENROLLED SITES

Corona Creek

Grant

Loma Vista

Mary Collins at Cherry Valley

McDowell

McKinley/PACS

McNear

Meadow

Miwok

Sonoma Mountain Elementary

The Spring Hill School

Valley Vista Public Waldorf School



Elia Caballero, 6th Grade, Loma Vista

[About▼](#)[Enrollment & Program Information▼](#)[Education Programs▼](#)[Encouragement Programs▼](#)[Events and Plans▼](#)[Tools and Resources▼](#)[Education Programs](#)

I Love Walk & Roll T-Shirts

[Printify Shop](#)

Stay Informed

[SRTS E-News](#)[Family Bicycling News](#)

Translate This Page

Donate To Safe Routes To School

[Donate Now](#)

Follow Us On

[Facebook](#)[Twitter](#)

SRTS Lead Agency

E-Bicycle Education Be E-Bike Safe



E-bikes are growing in popularity. They provide many benefits including teen independence and traffic and pollution reduction. But they must be legal. Any e-wheel device that travels faster than 20 mph on throttle power alone, by law, is considered illegal and unsafe for any rider.

According to California Vehicle Codes and law enforcement, if a throttle device sold as a class 2 is capable of being switched into going faster than 20 mph on motor power alone, these devices are not considered low-speed electric bicycles, but resemble electric motorcycles.

Safe Routes to School



[About](#)
[Enrollment & Program Information](#)
[Education Programs](#)
[Encouragement Programs](#)
[Events and Plans](#)
[Tools and Resources](#)

Tools and Resources

I Love Walk & Roll T-Shirts

[Printify Shop](#)

Stay Informed

[SRTS E-News](#)

[Family Bicycling News](#)

Translate This Page

Select Language ▼

California's Daylighting Law (AB 413)

New CA Vehicle Code Changes Effective January 1, 2025*

Daylighting is the simple concept that safety is improved by removing parked cars next to crosswalks. By keeping the area next to crosswalks clear of parked vehicle obstructions people walking and people driving or riding on the street can see each other better.

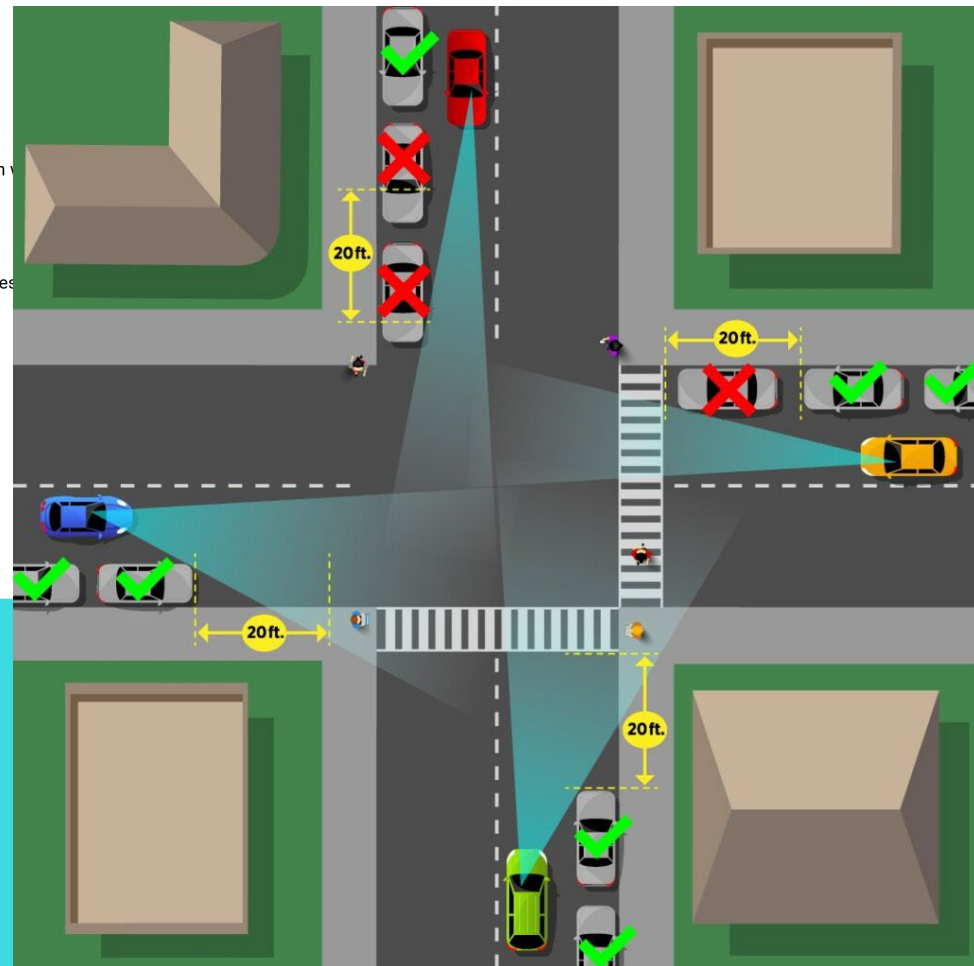
On All Public Roads, Including Residential Streets:

- No parking within 20 feet of a marked or *unmarked crosswalk.
- No parking within 20 feet of any intersection.
- Marked parking spaces currently within 20 feet of an intersection

Enforcement:

- Law enforcement agencies may issue parking citations to vehicles

[Stay informed and stay safe by reading the code.](#)



SRTS WALK AUDITS/SITE ASSESSMENTS

2024-25

Valley Vista/PJH/The Spring Hill
(8/29/24)

McNear (9/13/24)

Meadow (11/12/24)

Corona Creek/Kenilworth
(12/12/24)

Sonoma Mountain (1/14/25)

Grant (2/25)

Mary Collins at Cherry Valley
(2/11)

OTHER SITES: St. Vincents
Elem, San Antonio HS, St.
Vincent's HS, River Montessori

UPCOMING SRTS TASK FORCE MEETING

TBD



Laila Cornejo-Ruiz, 6th Grade, Loma Vista

www.sonomasaferoutes.org
@sonomasaferoutes

