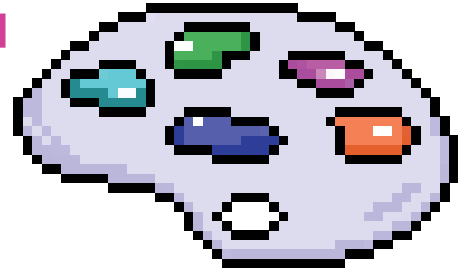




ART CONTEST



WALK & ROLL FOR OUR HEARTS!



Draw a picture demonstrating why you LOVE Walking and/or Rolling. Your picture should illustrate how or why it is fun and/or healthy for our hearts, minds, and bodies.

Winners will win a \$25 gift certificate to a local Art Supply Store! Winning pictures will ALSO be made into a 2026-27 "I Love Walk & Roll" Wall Calendar!

SUBMIT ART BY WEDNESDAY, MARCH 4, 2025

(please read contest rules before submitting)

WALK & ROLL FOR OUR HEARTS CONTEST RULES

ELIGIBILITY All Sonoma County K-8 Students

THEME(S) Illustrate how or why walking and rolling is fun and/or healthy for the hearts, minds, and bodies of kids and/or families in Sonoma County

Optional: You may wish to choose a season for your illustration; Winter, Spring, Summer, or Fall

SUBMISSION REQUIREMENTS

- Artwork must be 8.5x11, and must be landscape orientation
- All mediums welcome; drawing, painting, mixed media, digital illustration, etc. *If utilizing mixed media/collage elements, no more than 20% of collage material may be from newspapers, magazines, books, or other material pre-printed with text or designs (such as scrapbook paper)*
- Submit a scanned copy in .JPG or .PDF format to saferoutes@bikesonoma.org, OR mail to Safe Routes to School, Sonoma County Bicycle Coalition, PO Box 3088, Santa Rosa CA 95402-3088

- Include your name, school, grade level, and homeroom teacher, and a way to contact you (phone or email)
- All entries must be received by Monday, March 3, 2025

JUDGING CRITERIA

- Creativity and originality
- Clarity of art's message in communicating the theme
- Quality of & effort put into illustration
- Representation of diversity and inclusivity



AWARDS

- \$25 Gift Card to local art supply store
- Selected winning pictures will be featured in 2026-27 "I Love Walk & Roll" Wall Calendar.
- Calendars will be printed and distributed to the winners, principals of winning schools, and to every teacher with a winning student in the challenge.
- If chosen as a winner, Safe Routes to School must be able to contact you, and may need to collect original artwork.

Send any questions to saferoutes@bikesonoma.org.



METROPOLITAN
TRANSPORTATION
COMMISSION



sonomasaferoutes.org
SAFE ROUTES TO SCHOOL



@sonomacountyasaferoutes

